

ROBERT PROCOP

Exceptional Jewels

Treasures

FROM ROUGH TO
REMARKABLE

2020

TREASURE GEM HUNT

Creating a Masterpiece is a lengthy journey. It begins with a worldwide treasure hunt for the finest gems and continues through the creative process to the final polishing of each micro-element.



A Rough Near Colorless
Crystal from Sri Lanka

CUTTING COLORED GEMSTONES

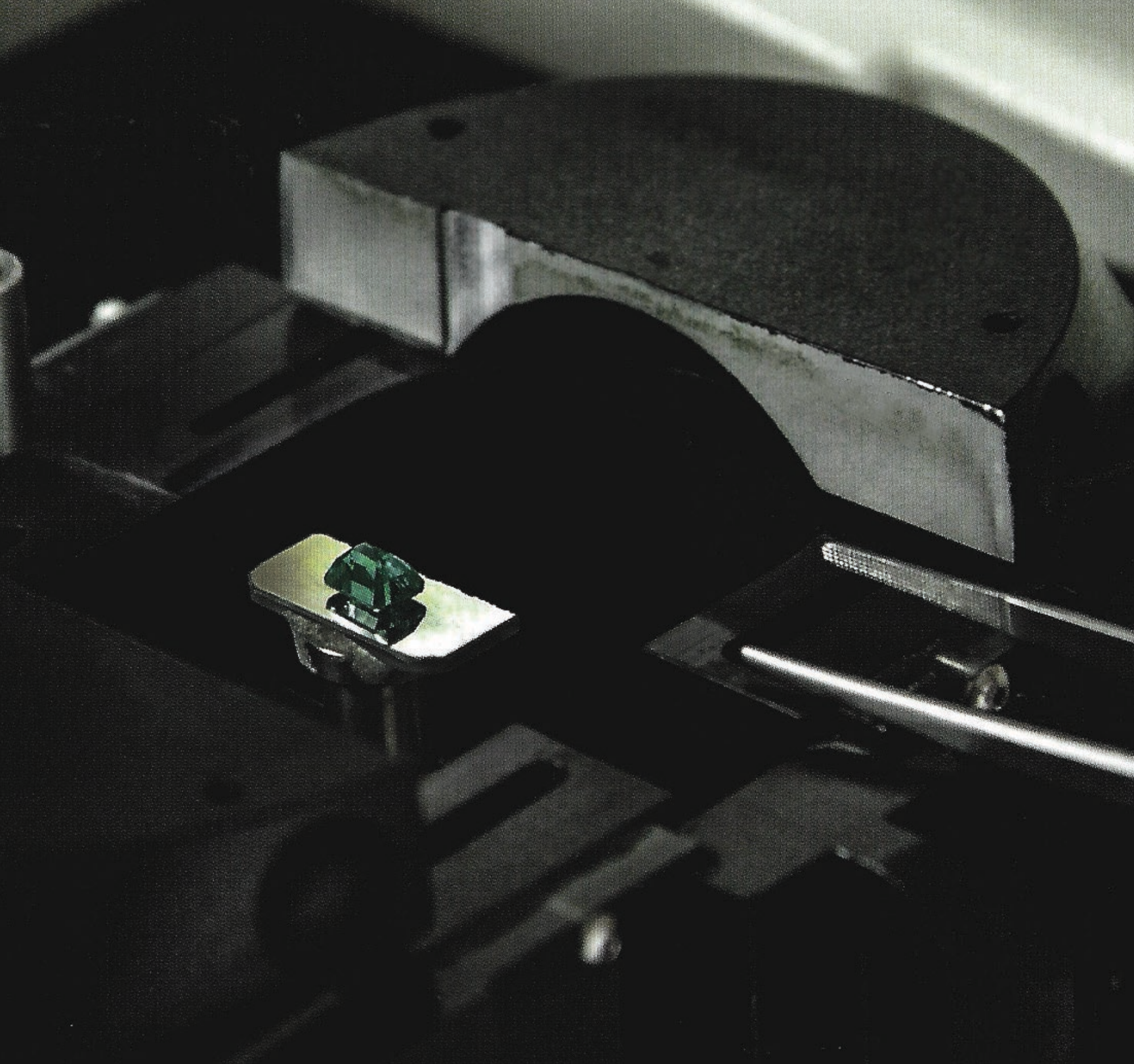
Cutting any fine gem requires the experience and skills of an expert cutter. The process begins with a close examination of the rough gem. The cutter makes note of the shape of the rough, the color, and any major inclusions. Then, after careful evaluation, a plan is made. Each gem is cut to display the best possible color, retain the most carat weight possible, and limit the number of inclusions within a finished gemstone.



UNIQUE FACETING

In the process of turning a gem from a rough stone into a finished jewel, each stone is hand faceted during the cutting process. A cutter examines the rough and makes important decisions that will affect the final appearance of the jewel, making adjustments to maximize the beauty of the finished gem.

This near colorless sapphire was cut with a unique combination of facets drawn from both traditional brilliant and step cuts. This brilliant faceting allows the hue of the gem to shine through. The step faceting and angled corners add a bold outline and emphasize the clarity of the stone.



Courtesy of **Magnificent Green** by Adolf Peretti

GEM LABORATORY CERTIFICATION

Laboratory certification of color stones have advanced significantly. In several aspects they give greater clarification than diamond certificates of today.

①

CARAT WEIGHT

Identical to diamonds, a gems' size is measured by its weight in carats. A metric carat is defined as 200 milligrams, and each carat is subdivided into 100 points.

②

CUT/SHAPE

Color stones are measured to the 1/100th of a millimeter and their various shapes are identified just like diamonds. The shape and color of the rough crystal influences the end result of the cutters faceting. Only a combination of perfect proportions, symmetry, and polish achieves maximum brilliance in gemstones.

3

CLARITY/TREATMENTS

Over 95% of all color gems have some form of clarity and color enhancement after they are mined. It is extremely important to identify whether the stone's color and clarity are completely natural or enhanced. Most gems have man-made enhancements done by heat treatments, resin, or beryllium treatments.

4

COUNTRY OF ORIGIN

Laboratories are able to identify the regional location of a gems' origin. The value of gemstones like rubies, sapphires, and emeralds vary significantly depending on the country of origin. Color gems can be distinguished by their inner materials and trace elements. These characteristics give a gemologist clues into a gems' origin.

5

COLOR

Identical to fancy color diamond certifications, a gems' primary color is identified and listed on its certificate. Often times, a gems' primary color is accented by a second or third color that influences the overall tone of the gem. These colors are listed on the certificate as well.



Verify this report at gia.edu

GIA GEMOLOGICAL REPORT

SAPPHIRE ORIGIN REPORT

GIA REPORT 2203086783

February 26, 2019

DETAILS

Shape..... Octagonal
Cutting Style Step Cut
Transparency Transparent
Color..... Near Colorless

RESULTS

Species..... Natural Corundum
Variety..... Natural Sapphire
Geographic Origin Sri Lanka

TREATMENT

No Indications of Heating

Item Description: One loose stone
Weight: 7.58 carats
Measurements: 12.58 x 9.67 x 6.57 mm
Comments: Any statement on geographic origin is an expert opinion based on a collection of observations and analytical data.

FACTSHEET This is a digital representation of the original GIA Report. This representation might not be accepted in lieu of the original GIA Report in certain circumstances. The original GIA Report includes certain security features which are not reproduced on this facsimile.

To learn more about how GIA determines and classifies gemstone origin, as well as maps describing localities, go to reportcheck.gia.edu to view this report.



Image is approximate

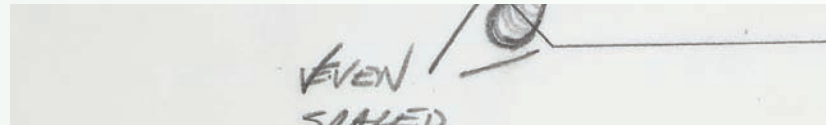
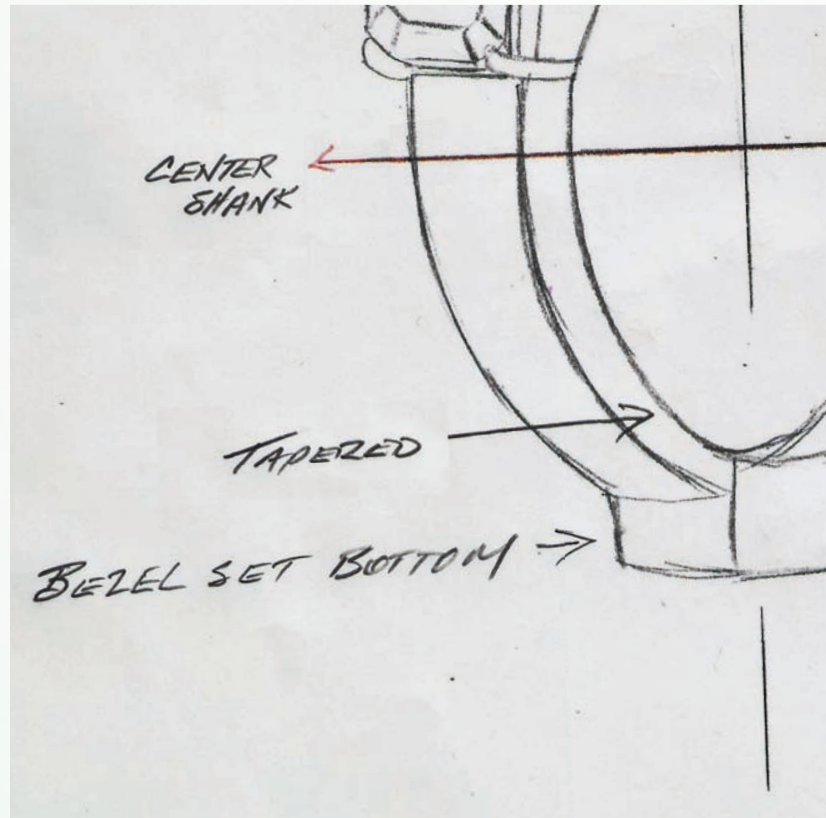
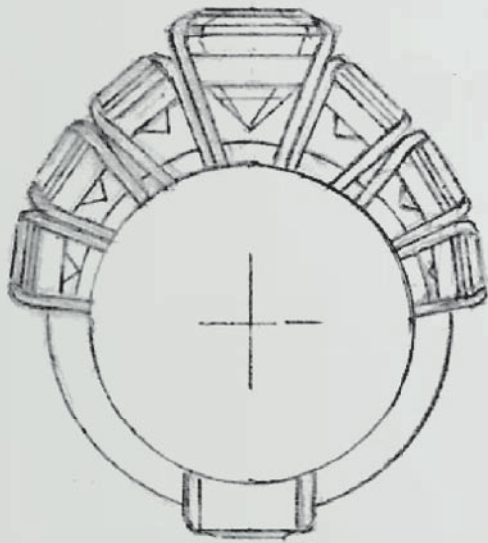
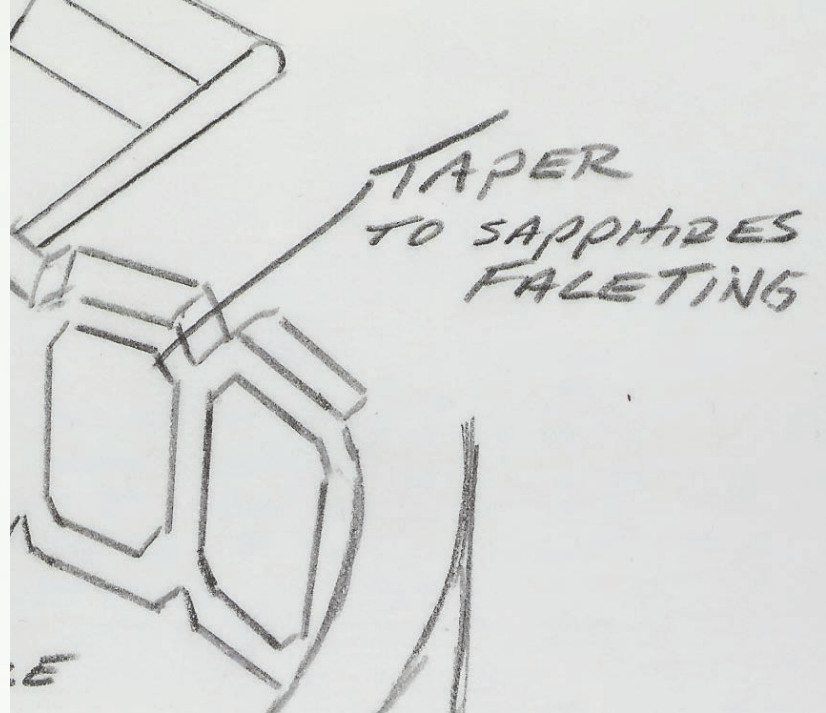
The results documented in this report refer only to the article described, and were obtained using the techniques and equipment used by GIA at the time of examination. This report is not a guarantee or valuation. For additional information and important limitations and disclaimers, please see www.gia.edu/terms or call +1 800 421 7250 or +1 760 402 4500. ©2015 Gemological Institute of America, Inc.

reportcheck.gia.edu

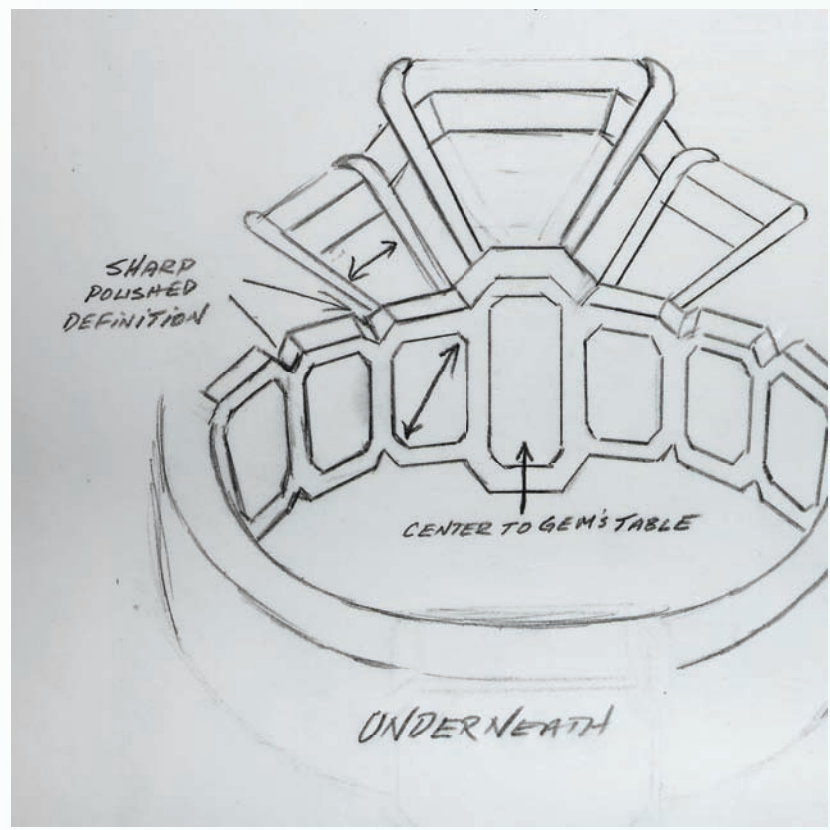
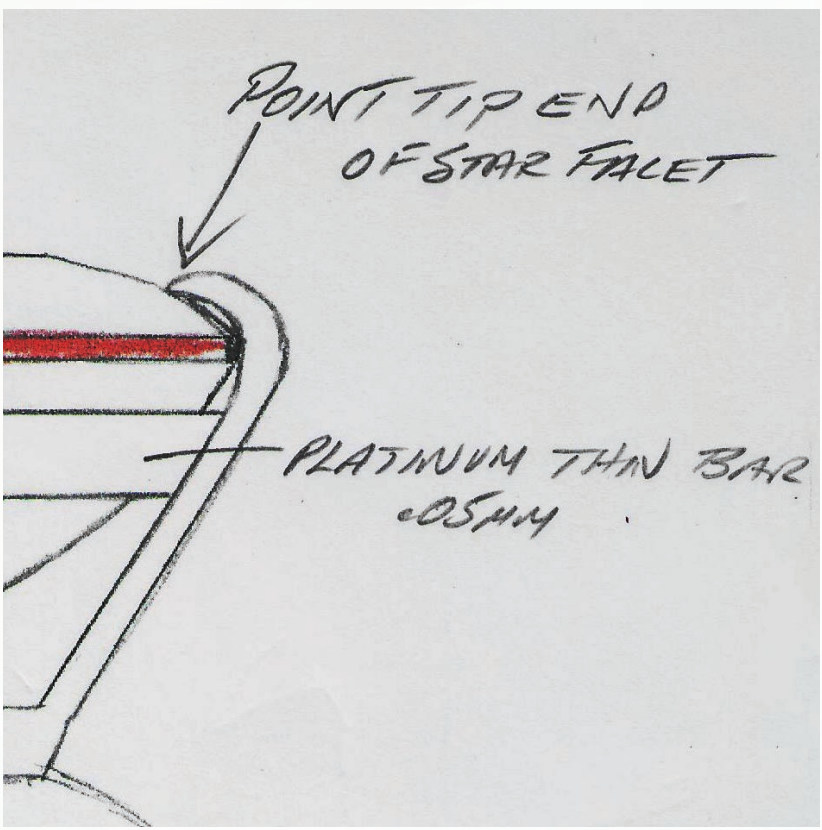
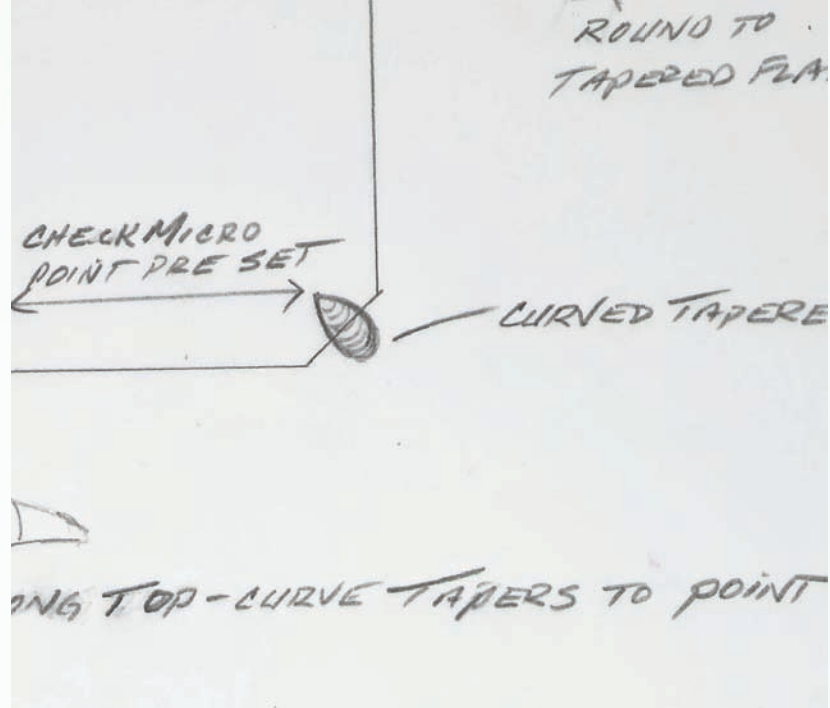


THE SECURITY FEATURES IN THIS DOCUMENT, INCLUDING THE HOLOGRAM, QR CODE AND MICROPRINT LINES, IN ADDITION TO THOSE NOT LISTED, EXCEED DOCUMENT SECURITY INDUSTRY GUIDELINES.

INSPIRATION & DESIGN



After each stone is certified by the laboratory, the gem is then studied to determine the light, tones of color, brilliance, and shape that form its unique personality. This personality inspires the initial design and a beginning concept is hand-sketched to paper.





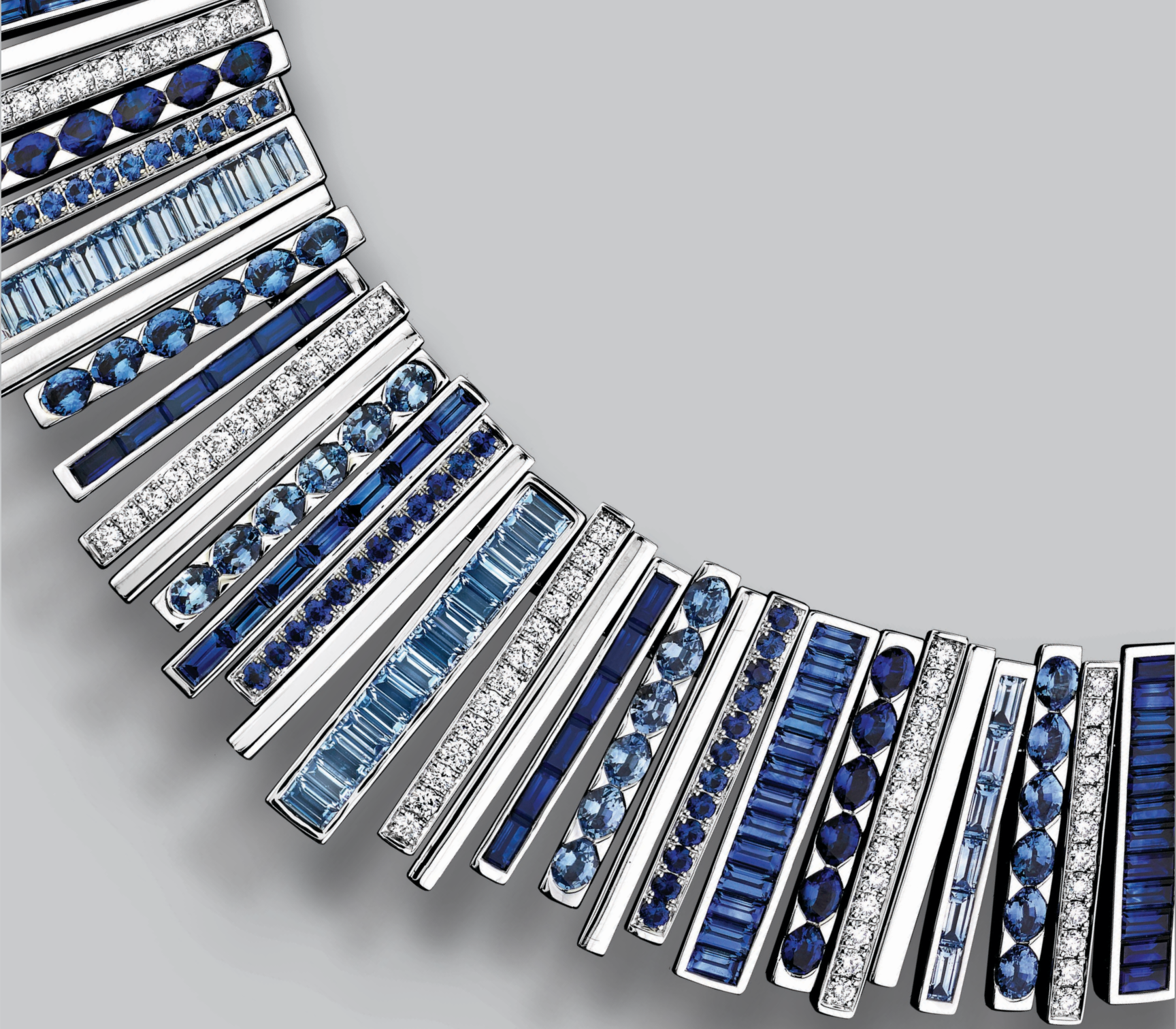
TREASURE DETAILS

Handcrafted in platinum, this 7.58ct near-colorless sapphire is complemented by seven multi-colored sapphires. This creates a beautiful rainbow effect.



THE MASTERPIECE COLLECTION

The Masterpiece Collection is the culmination of two years of collecting gemstones in the perfect hues and cutting them to exacting standards.



Blue Sapphire
Masterpiece Necklace

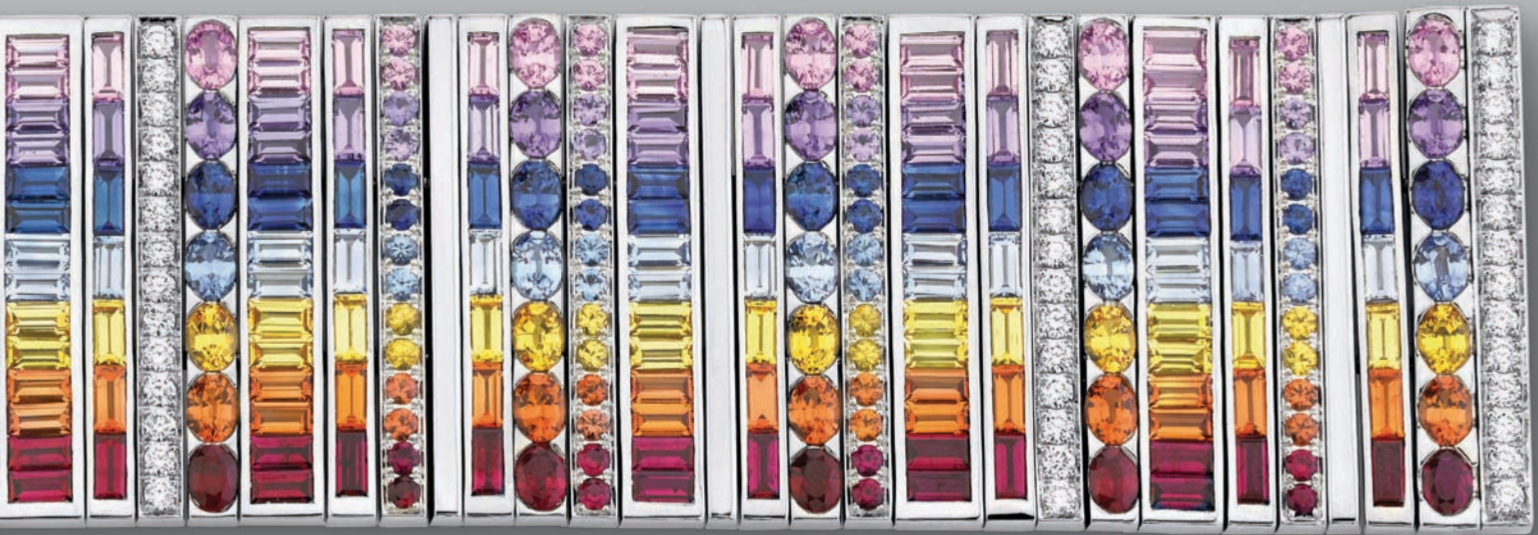




Blue Sapphire Masterpiece Earrings



Multi-Color Masterpiece
Grand Bracelet





Light Blue Sapphire Masterpiece
Clutch Earrings



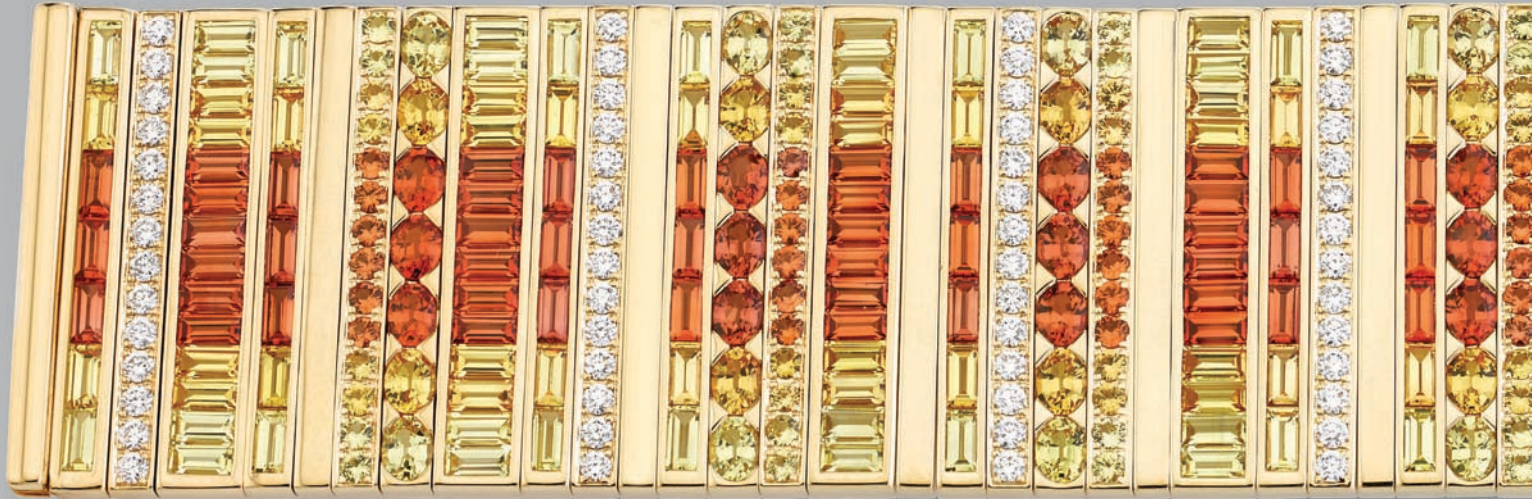
Blue & Pink
Sapphire
Masterpiece
Bracelet

Pink Sapphire
& Diamond
Masterpiece
Bracelet

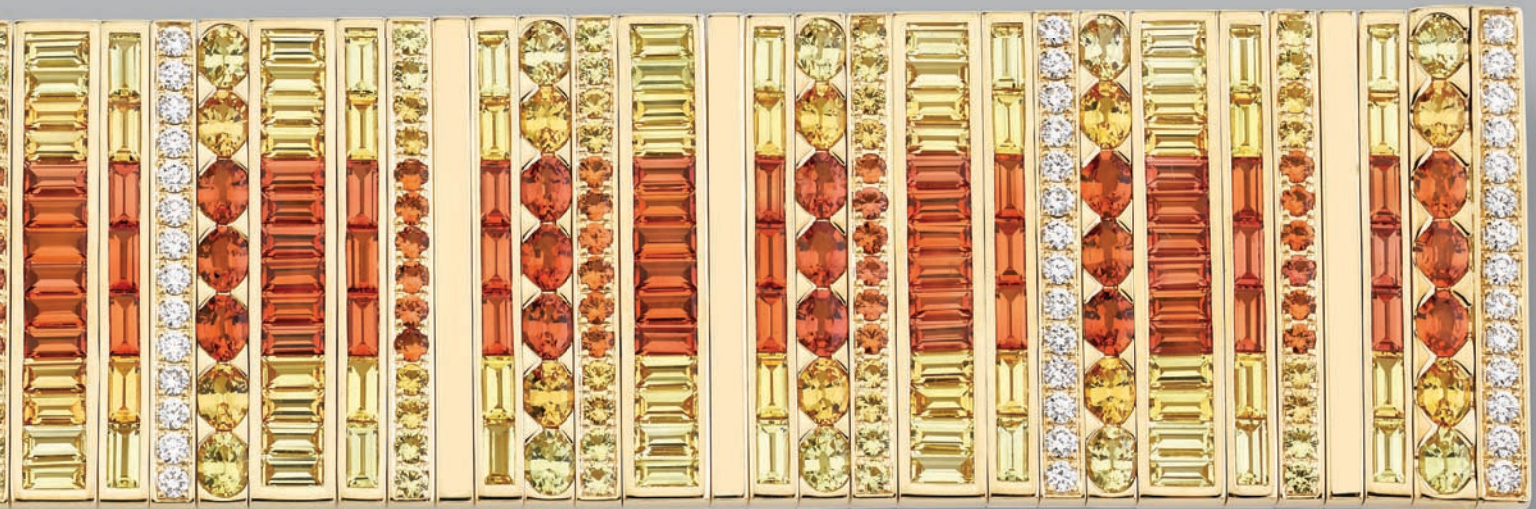




Pink Sapphire Masterpiece
Clutch Earrings

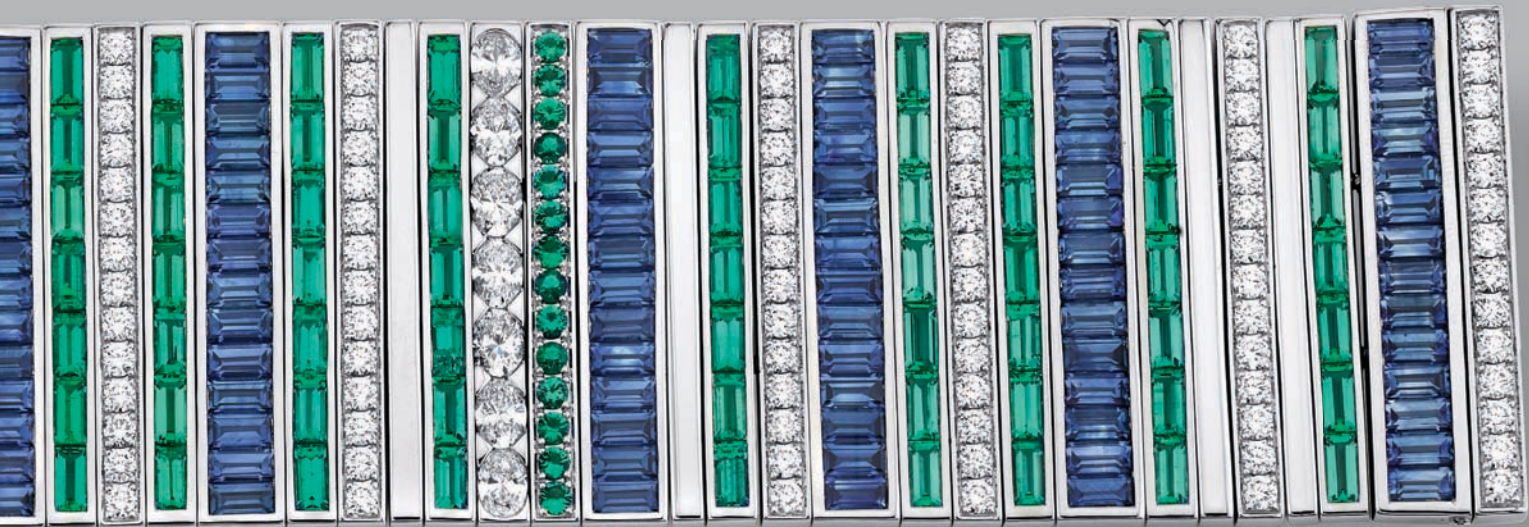


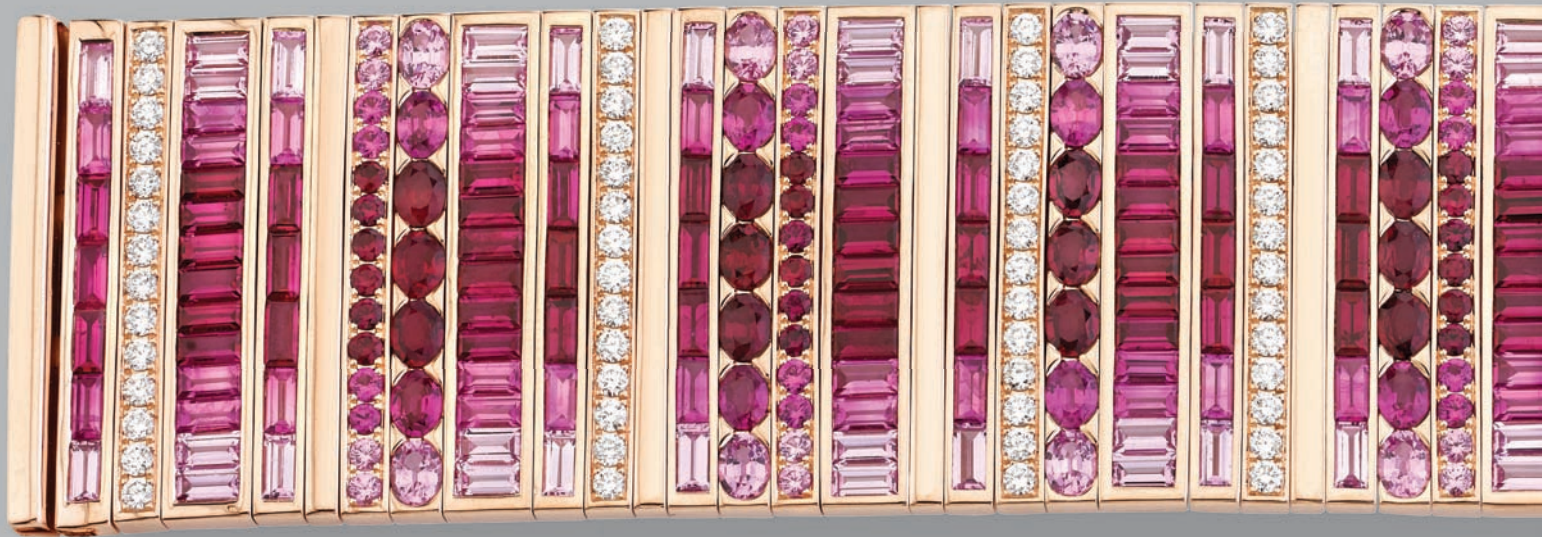
Yellow & Orange Sapphire
Masterpiece Grand Bracelet



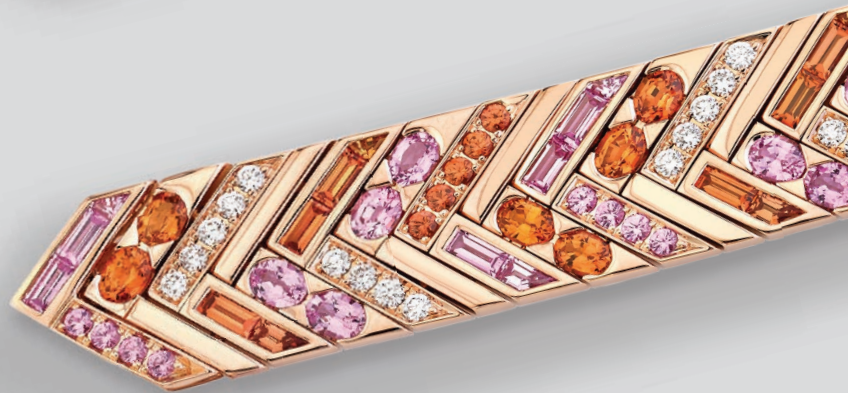


A Bright 2.22ct Emerald-Cut Yellow
Sri Lanka Sapphire Ring





Ruby & Pink Sapphire Masterpiece
Grand Bracelet



Chevron Masterpiece
Bracelets

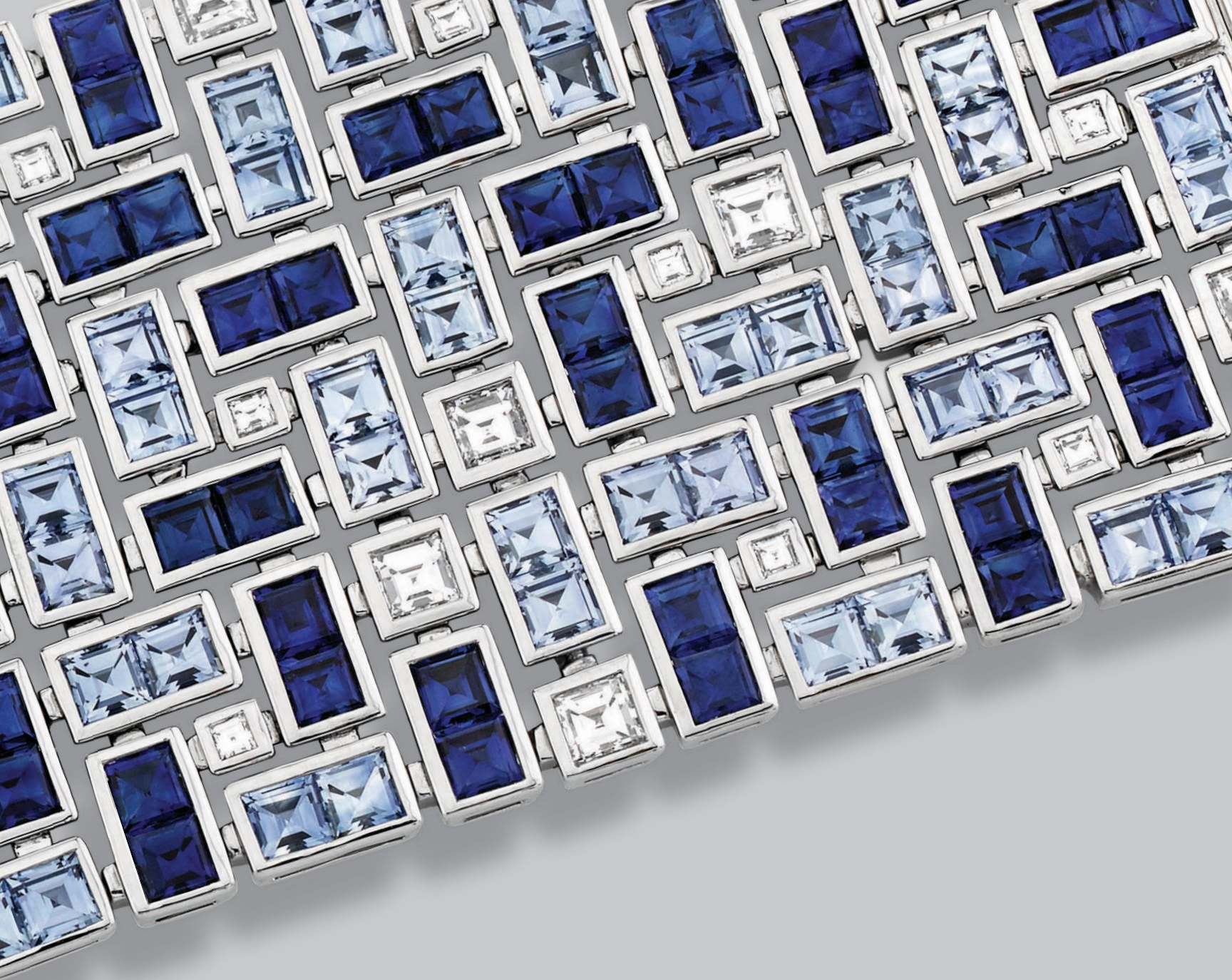


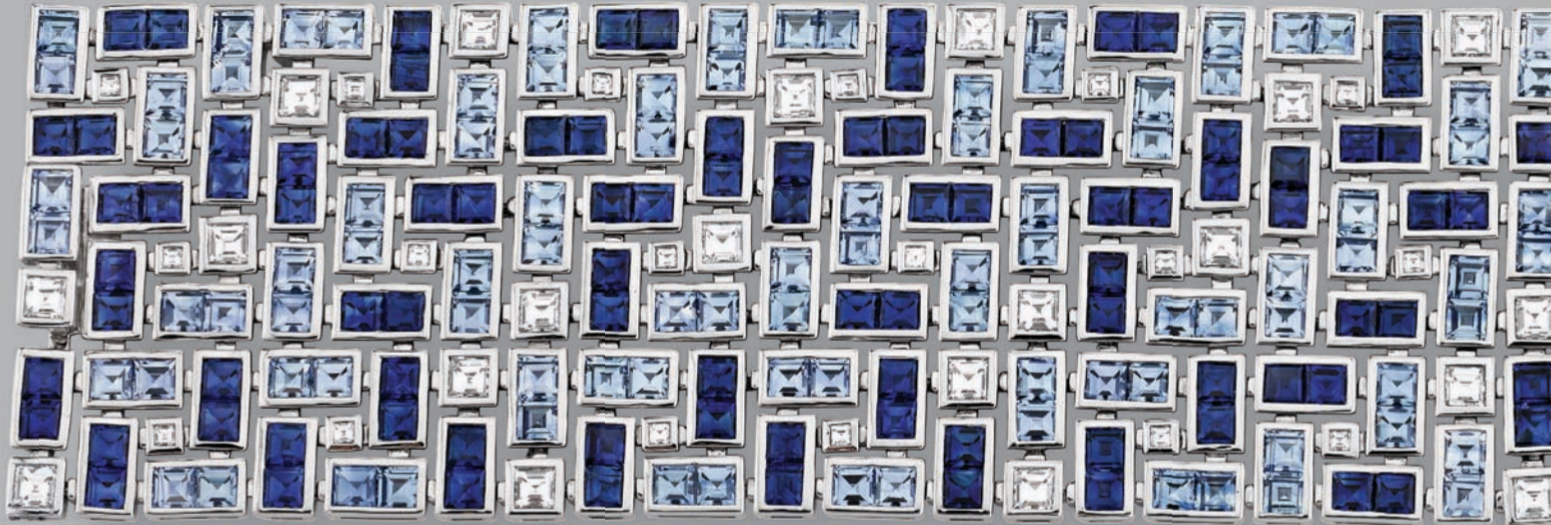


THE MASTERPIECE COLLECTION

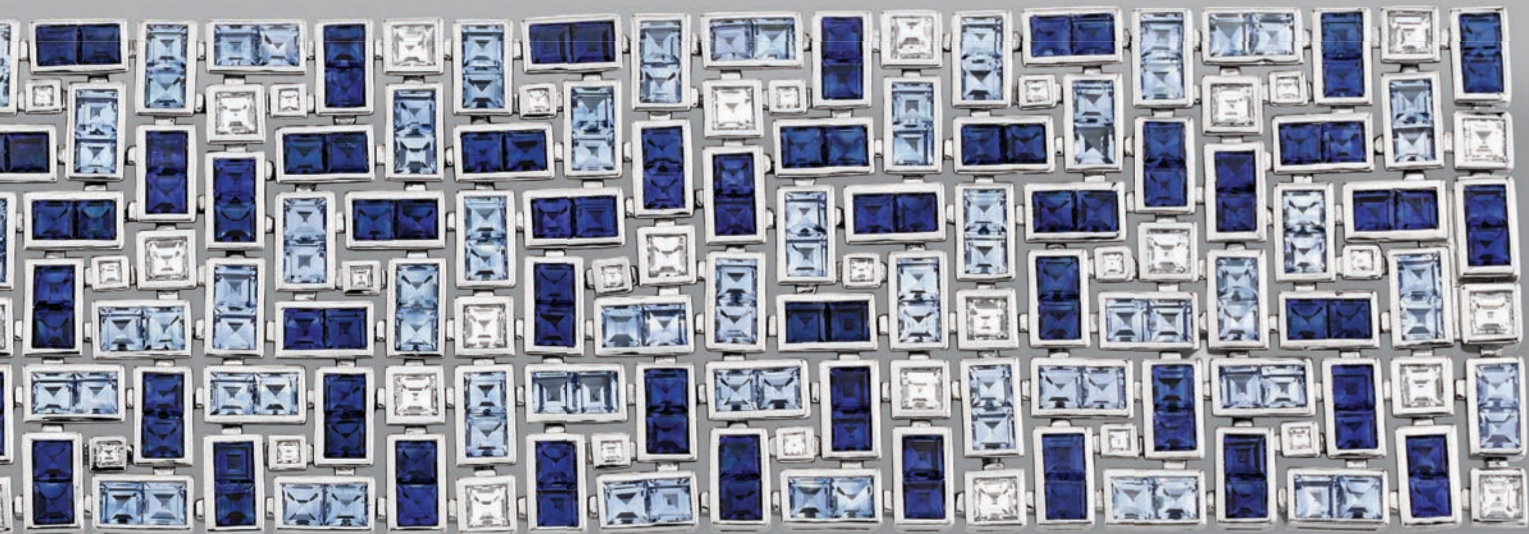
French-Cut

This Masterpiece Bracelet is a unique combination of colorless diamonds and sapphires. Two distinct and frequently desired blue colors, cornflower blue and royal blue, make up this beautiful piece.





Blue Sapphire Masterpiece French-Cut
Grand Bracelet



Cornflower blue is characterized by a pure blue hue resembling the color of a cornflower plant. It can range from a medium to a light tone. Royal blue is more of a medium deep blue to a strong dark blue color.

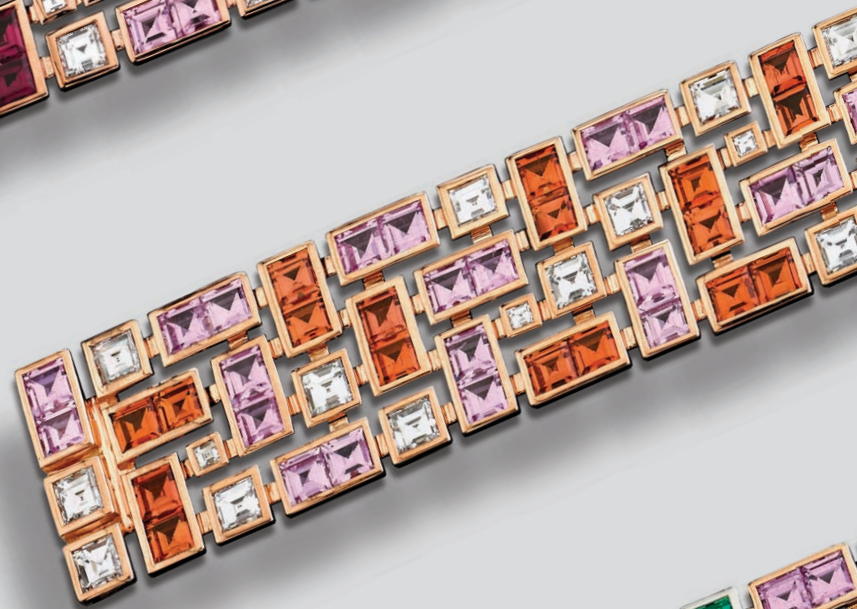
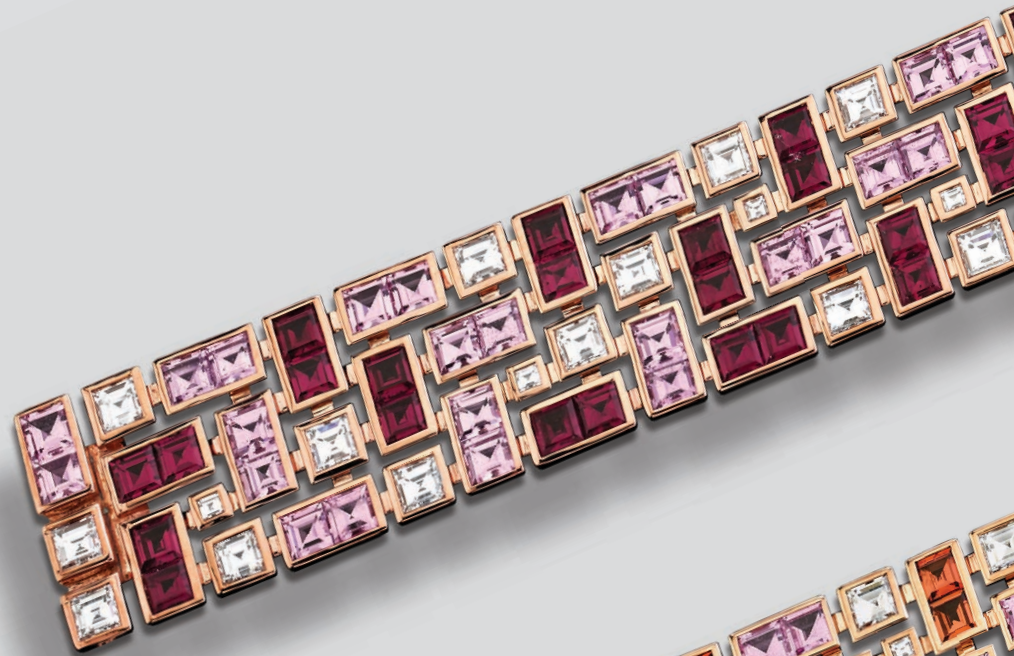


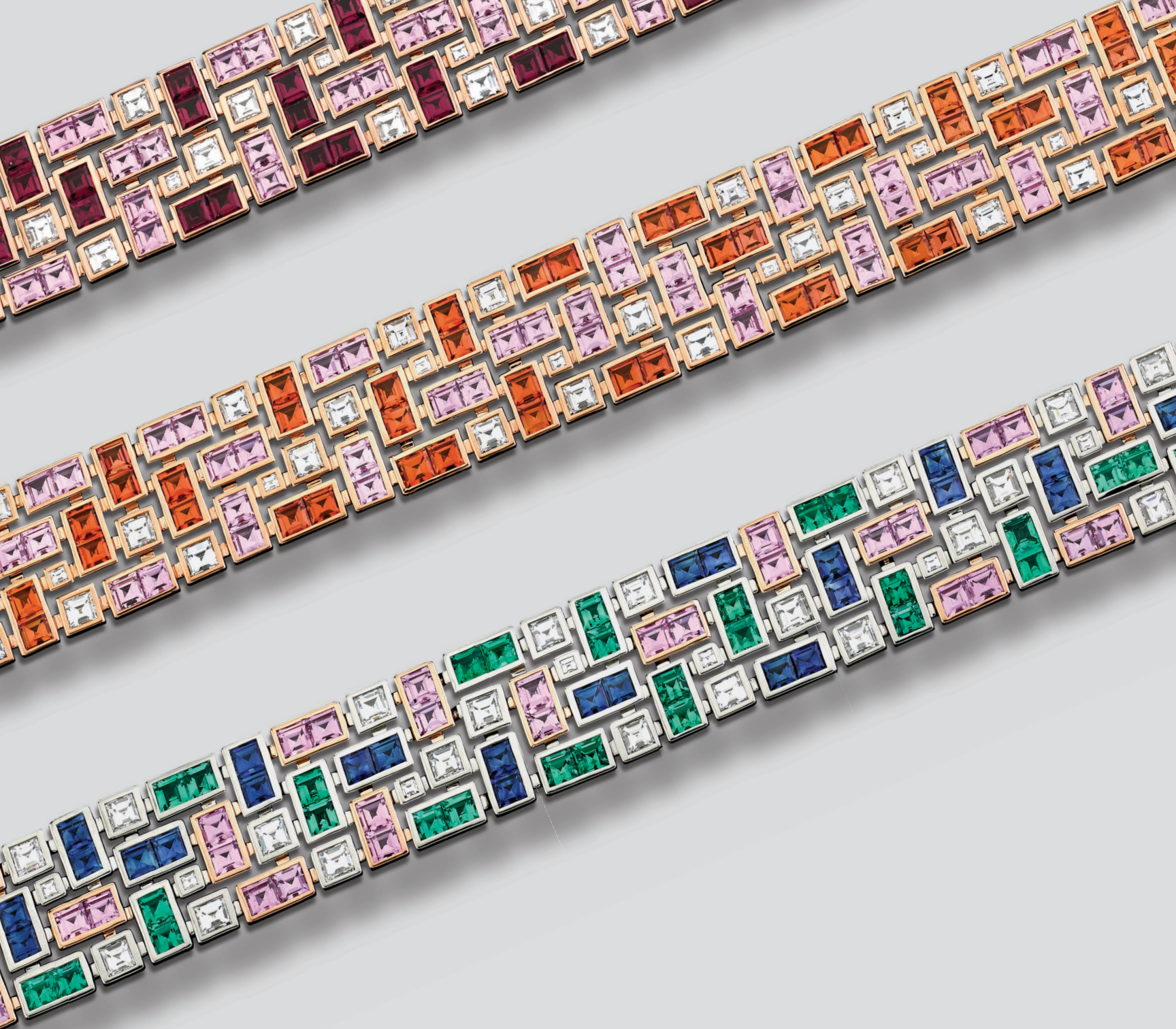
A Stunning Purple-Pink Emerald-Cut
Madagascar Sapphire Ring

Light Blue & Pink
Sapphire Masterpiece
French-Cut Bracelet



Masterpiece
French-Cut Bracelets





THE DE LA VIE COLLECTION

This collection radiates brilliance and excitement with an array of colors and shapes. Just as gentle raindrops give life and color to the earth below, these De La Vie gemstones give color and exuberance to every piece they surround. With a multitude of shapes and accents, this collection embodies life with its magnificent, inspirational colors.



Emerald & Blue Sapphire
De La Vie Necklace





Emerald & Blue Sapphire De La Vie
Hoop Earrings



Multi-Color
De La Vie Bracelet

Ruby & Pink Sapphire De
La Vie Bracelet



Ruby & Pink Sapphire
De La Vie Necklace





Ruby & Pink Sapphire De La Vie
Hoop Earrings

Blue Sapphire
Narrow De La Vie
Bracelet





Blue Sapphire De La Vie
Hoop Earrings



Narrow De La Vie
Bracelets



Sapphire & Ruby

THE ROYAL GEMSTONE

Sapphire and Ruby are derived from the same mineral, Corundum. Corundum comes in every color. When it is red it is called a Ruby instead of a Sapphire. They have both been a source of fascination and desire since their discovery.

The jewels on the following pages are part of our new collection. They have been carefully selected and sourced directly from the mines. The combination of color, quality, and size make these sapphires some of the rarest treasures that the earth has ever produced.



A Spectacular 7.45ct
Blue-Green Ethiopian
Sapphire Ring





An Exceptional 5.05ct Cushion Pink
Madagascar Sapphire Ring



A 2.05ct Vivid Red Emerald-Cut
Mozambique Ruby Ring



A Stunning 8.16ct Cushion Cornflower Blue
Madagascar Sapphire Ring



A Unique 5.07ct
Tangerine-Orange
Sri Lanka Sapphire Ring



A Perfect Pair of Vivid Red 10.07ct TW
Mozambique Ruby Earrings



A Rare 4.22ct
Green-Blue
Montana
Hexagonal
Sapphire Ring